

Up

USER MANUAL

说明书

敬爱的用户

欢迎购买山灵UP便携USB解码耳放，谨让我们借此机会向您表示诚挚的谢意。我们向您建议：在动手操作之前，请仔细阅读此使用说明书，并注意存放好以备随时参考。

产品简介

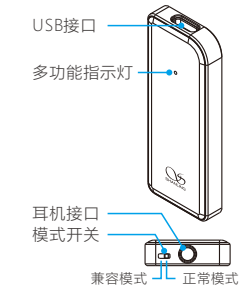
本产品是一款高性能便携USB解码耳放，USB接口为新型的TYPE C接口，此接口连接到手机或电脑均可使用。具有DSD硬解功能，PCM最高采样率支持192KHz/24bit，DSD最高采样率支持128FS。

安全指示

1. 不可自行开启本机进行维修或改造！产 不设有用户自行检修的零件，本机的维修须请具备专业资格的人员进行。开启机器及随意改造内部电路会令检修人员难以维修本机，而且会对机器造成性能或质量的影响。

2. 请不要在特别热、冷、多尘或潮湿的环境中使用本产品。
3. 使用时不要让产品摔落，或与硬物摩擦撞击，否则会导致解码器表面磨花或其它硬件损坏，不要剧烈震动或撞击，防止不正确使用而损伤本产品。
4. 不要使用化学剂或清洁剂清洁本产品，这样会损伤产品表面和腐蚀喷漆。

部件名称



操作说明

准备工作

1. 连接本机时，请将模式开关拨到“正常模式”位置。

使用过程中，如发现安卓手机不能兼容本设备时，请将模式开关拨到“兼容模式”位置。

2. 使用USB线连接本机到手机或电脑时，本机红色指示灯点亮。

多功能指示灯

当连接本机并播放音乐时，指示灯点亮功能对应如下：

亮红灯：表示待机状态。

亮蓝光：表示播放PCM格式音乐文件。

亮白灯：表示播放DSD格式音乐文件。

使用手机播放

1. 扫描二维码下载海贝音乐播放器并安装。
2. 将本机连接手机，本机的指示灯亮起，再打开海贝音乐。如果指示灯没有亮起则说明该手机无法支持本机。



一定要先连接手机，再打开海贝音乐APP。

3. 如果出现授权访问提示，请直接点击确定就可以了，否则无法正常使用本机。



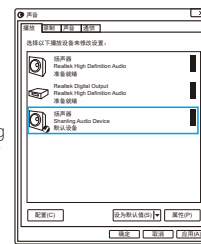
4. 运行海贝音乐APP，打开“高级设置”找到“DSD模式”并设为Native。

当使用iPhone手机时不用设此项，使用前先用tools软件将电脑中的音乐同步到该手机海贝音乐APP的文件夹下。



使用电脑播放

1. 请登录官网www.shanling.com进入UP产品页进行驱动下载。
2. 连接电脑后，请将USB驱动安装至电脑上。
3. 在电脑的“声音”选项右键选择“播放设备”，并勾选“扬声器Shanling Audio Device”为默认设备，如右图示：
4. 打开音乐播放器并播放音乐。



规格与参数

输出功率：	65mW @ 32Ω
频率响应：	20Hz ~ 20kHz (-0.5dB)
失真度：	<0.004% (600mV@ 32Ω)
信噪比：	>108dB
支持PCM采样率：	44.1kHz ~ 192kHz
支持DSD码流规格：	64FS及128FS
体积(宽×深×高)：	24×62×7.2mm
净重：	约13g

随机附件

说明书：1份	保修卡：1份
Lighting-TYPE C线：1根	Micro USB(OTG)-TYPE C线：1根
USB A-TYPE C线：1根	TYPE C(OTG)-TYPE C线：1根



公司名称: 深圳山灵数码科技发展有限公司
公司地址: 深圳市南山区蛇口赤湾一路10号
服务热线: 400-6688-701
E-mail: info@shanling.com
官网: http://www.shanling.com
※ 由于产品不断改进, 各项规格及设计随时更改, 恕不另行通知。

Dear Customer

Thank you for purchasing Shanling UP portable headphone amplifier with DAC. We'd like to express our sincere gratitude to you. You are recommended to read the user manual carefully before operating the device. Please keep this user manual properly for future reference.

Product Introduction

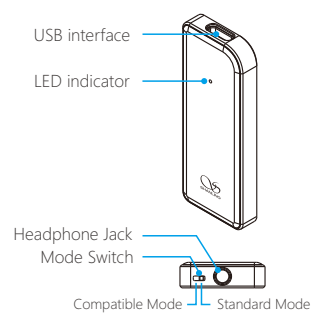
This device is a high-performance headphone amplifier with DAC, with USB type-c interface for PC or smartphone, supporting DSD playback, while maximum PCM sampling rate is 192KHz/24bit, and maximum DSD sampling rate up is 128FS.

Security Instructions

1. Don't repair or modify the device without permission. None of the parts in this device could be checked or repaired by the user. Only professionals are entitled to check or repair this device. If the user dismantles it and modify its internal circuit personally, it will make it difficult for our maintenance worker to repair, and may possibly impacts its performance and quality.
2. Please don't use this device in extremely hot, cold, dusty or humid circumstances.

3. Prevent this device from falling, friction, or crashing against hard objects during use, otherwise surface scratch, battery disconnection, data loss or other hardware damages will be caused. Please also avoid violent vibration or impact.
4. Don't clean this device with chemicals or detergents, otherwise its surface and top coating may be damaged.

Names of Parts



Operation Instructions

Preparing

1. Switch to "Standard Mode" when Shanling Up is connected.

If Up failed to connect to Android system, please switch to "Compatible Mode".

2. Connecting to phones or PCs through USB cable, the indicator turns on in red.

Multi-functional Indicator

When your device is connecting to Up, the indicator status as follow:

Turning on in red: Standby

Turning on in blue: Playing music in PCM format

Turning on in white: Playing music in DSD format

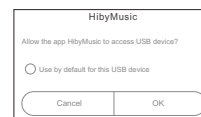
Connecting to phone

1. Scan QR code to get Hiby music player and install it.
2. Connecting Up to your smartphone, opening up Hiby Music APP when indicator on Up turns on. If Up couldn't be supported by your smartphone, the indicator won't light up.



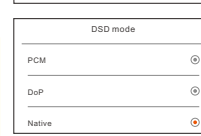
Connecting the phone must be the first step.

3. If it shows access authentication reminder, please directly click "OK", or Up won't work.



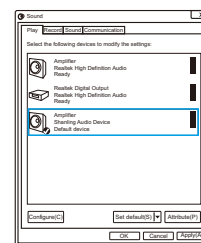
4. Opening up Hiby music APP in advanced setup option, find "DSD mode" and click "Native"

It won't be necessary to do if it connected to an iPhone. Using tools to Synchronize music from computer to Hiby APP on iPhone.



Connecting to PC

1. Enter the UP product page on www.shanling.com to download the USB driver.
2. Install USB driver on the computer.
3. In "sound" option, right click to select "player", tick "Shanling Audio Device" as default player, as shown on the right.
4. Use Windows or Mac player to software to player music.



Specifications and Parameters

Output power:	65mW @ 32Ω
Frequency response:	20Hz ~ 20kHz (-0.5dB)
Total harmonic distortion:	<0.004% (600mV@ 32Ω)
SNR:	>108dB
Supported PCM sampling rate:	44.1kHz ~ 192kHz
Supported DSD bit stream specification:	64FS and 128FS
Dimension (Width×Depth×Height):	24×62×7.2mm
Net weight:	about 13g

Attached Accessories

User's manual: 1	Warranty card: 1
Lighting-TYPE C cable: 1	Micro USB(OTG)-TYPE C cable: 1
USB A-TYPE C cable: 1	TYPE C(OTG)-TYPE C cable: 1



Company name: Produced by Shanling DTD. CO., LTD
Address: No.10, Chivan 1 Road, Shekou Nanshan District of Shenzhen City, China.
Service hotline: 400-6688-701
E-mail: info@shanling.com
Website: <http://www.shanling.com>

※ due to product is ameliorating, specifications and design are subject to change, do not notice.